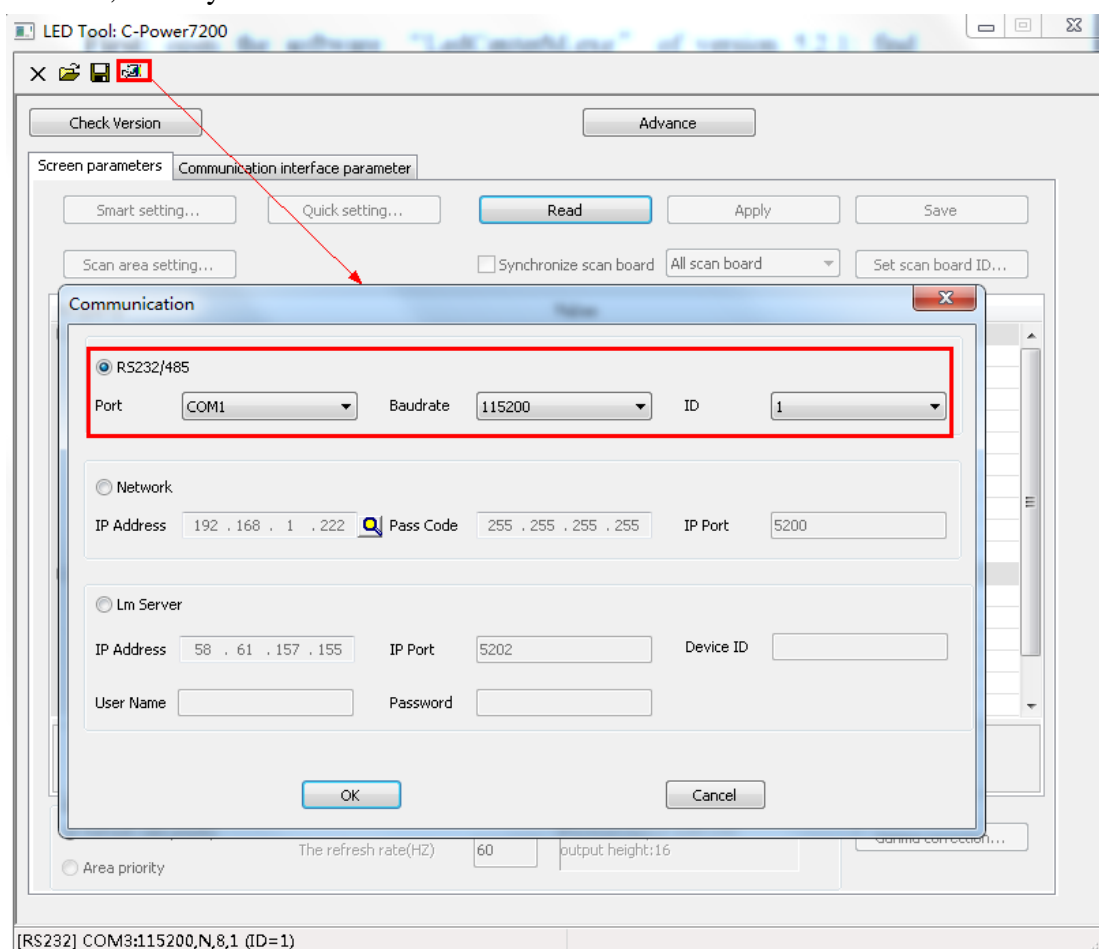



Instruction for C-Power7200 Ledtool

First: open the software “LedCenterM.exe” of version 5.2.1; find “Tools”—“Ledtool”—“C-Power7200”, entry the parameter setting interface.

Second: select the communication way

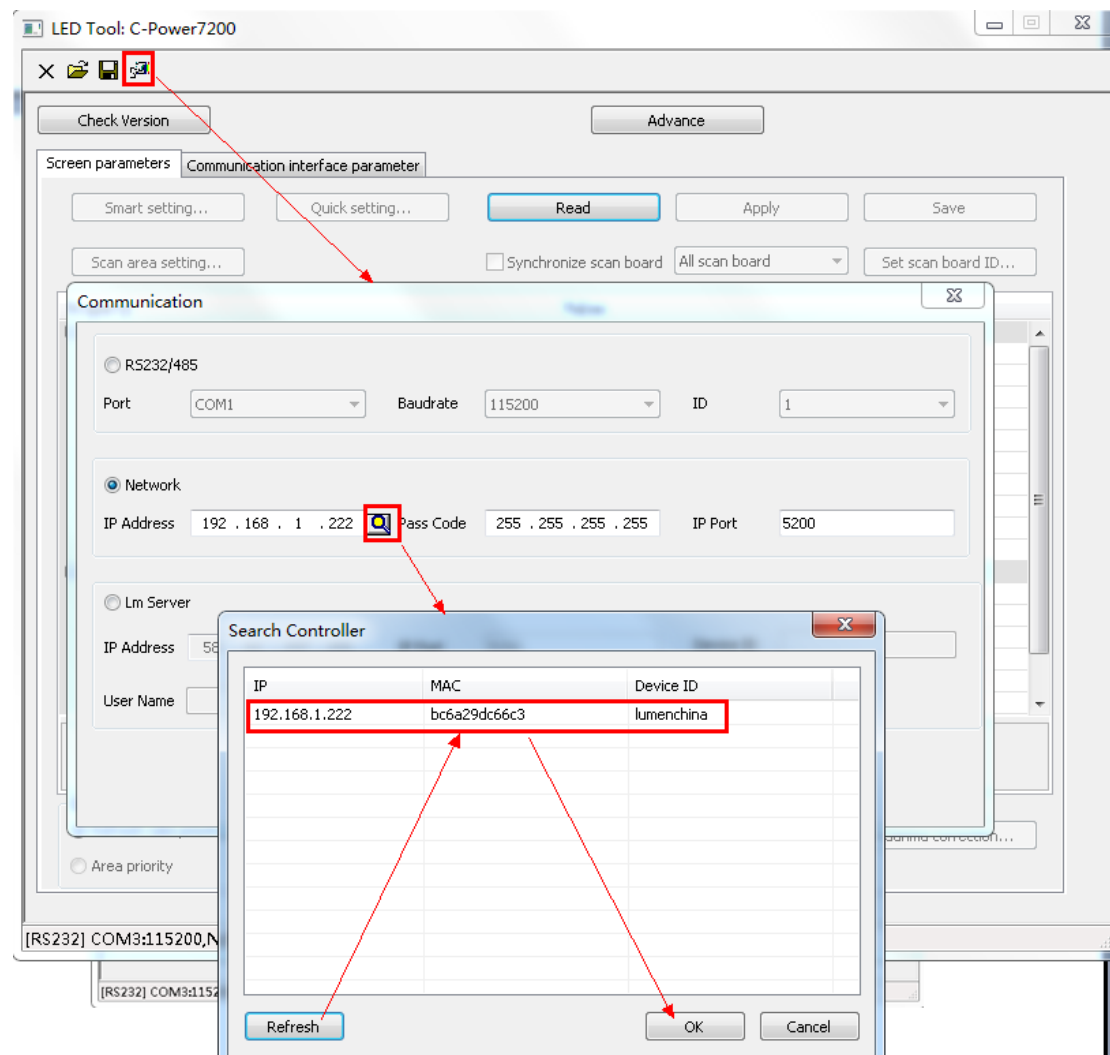
1. Serial port way(RS232/485): select your computer’s COM port which is connecting to your controller, controllers’ original parameter is : baud rate is 115200, ID is 1, finish your selection then click “OK”.



2. Network way: select “network”, click the search button , search the controllers connecting on the network, click “refresh”, will see all the controllers connecting on the network you’re your selection and click “OK”

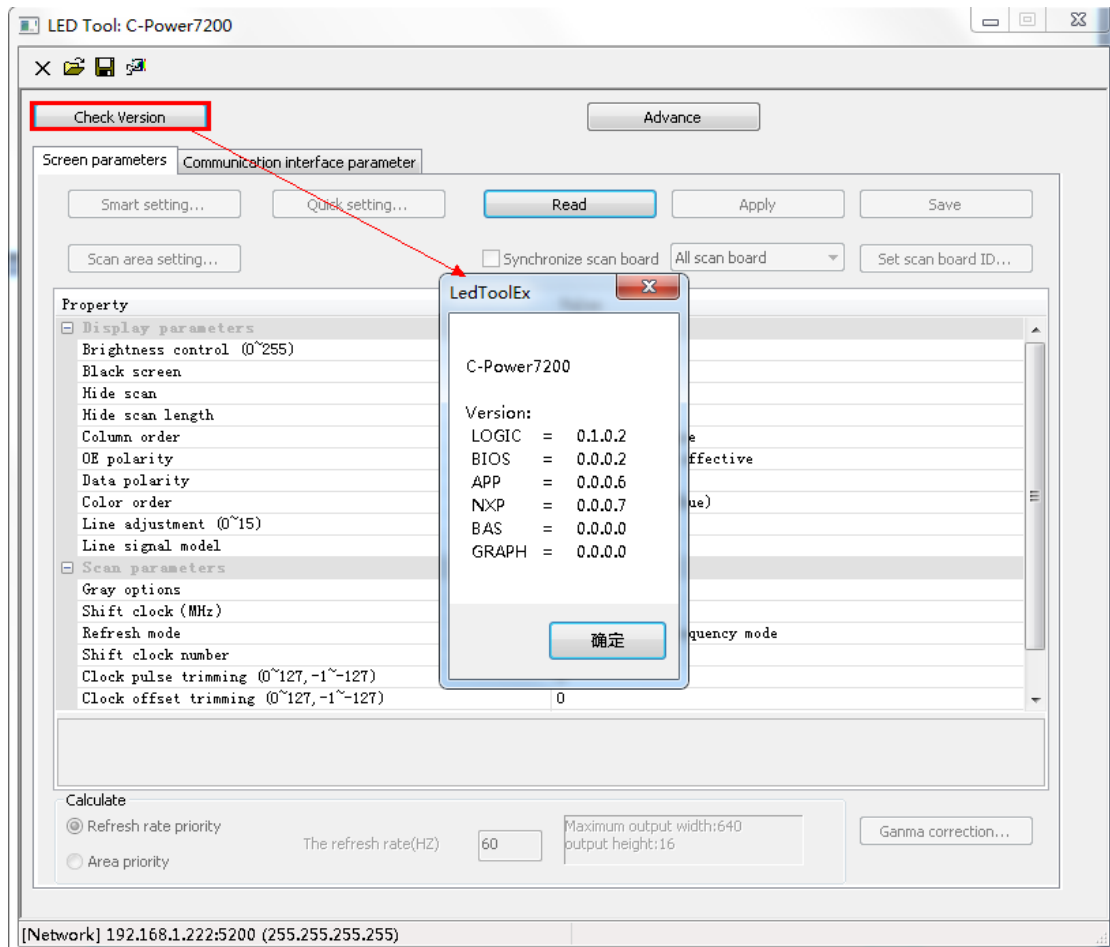
Controllers’s original parameter is: IP Address : 192.168.1.222 , Pass Code :

255.255.255.255, IP Port: 5200



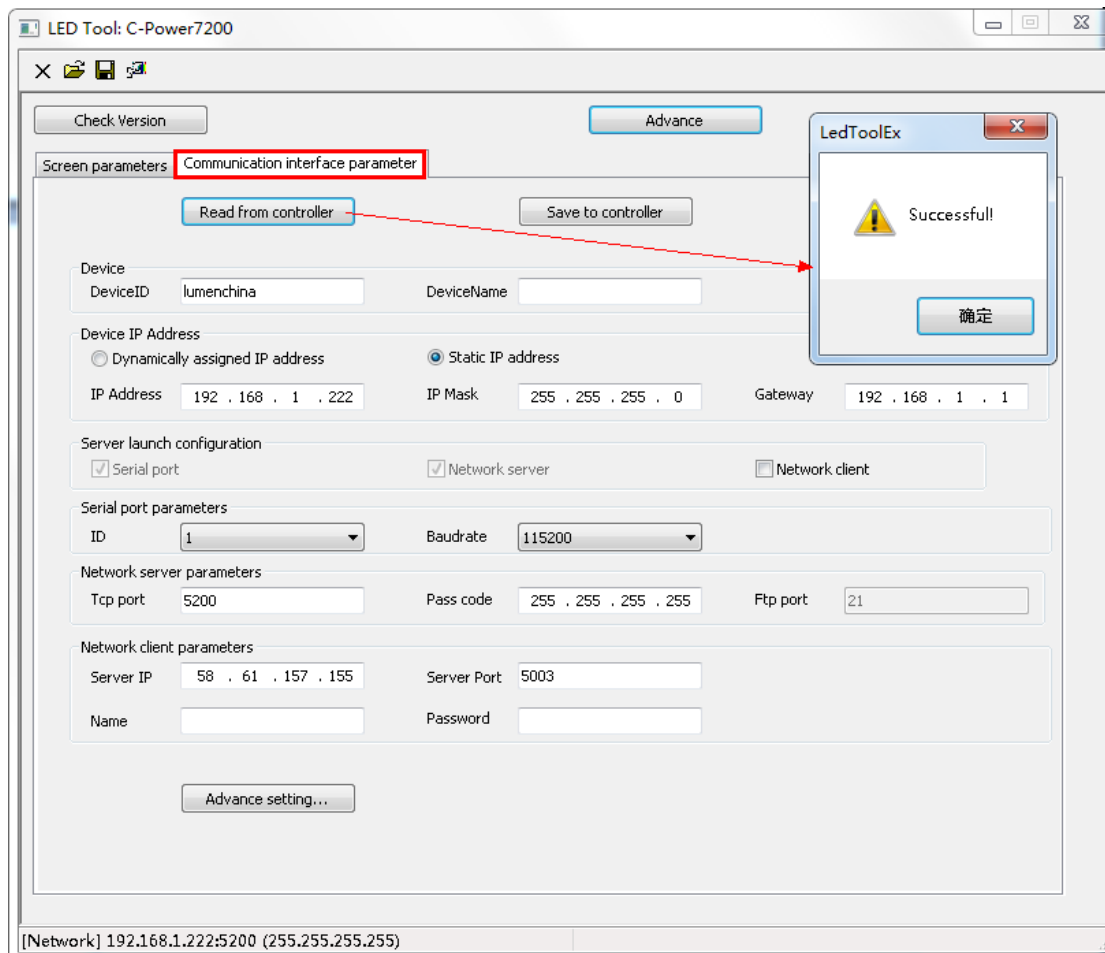
Third: check the controller's version

After you have selected your communication way, click "Check Version", then will showed the controller's version information.

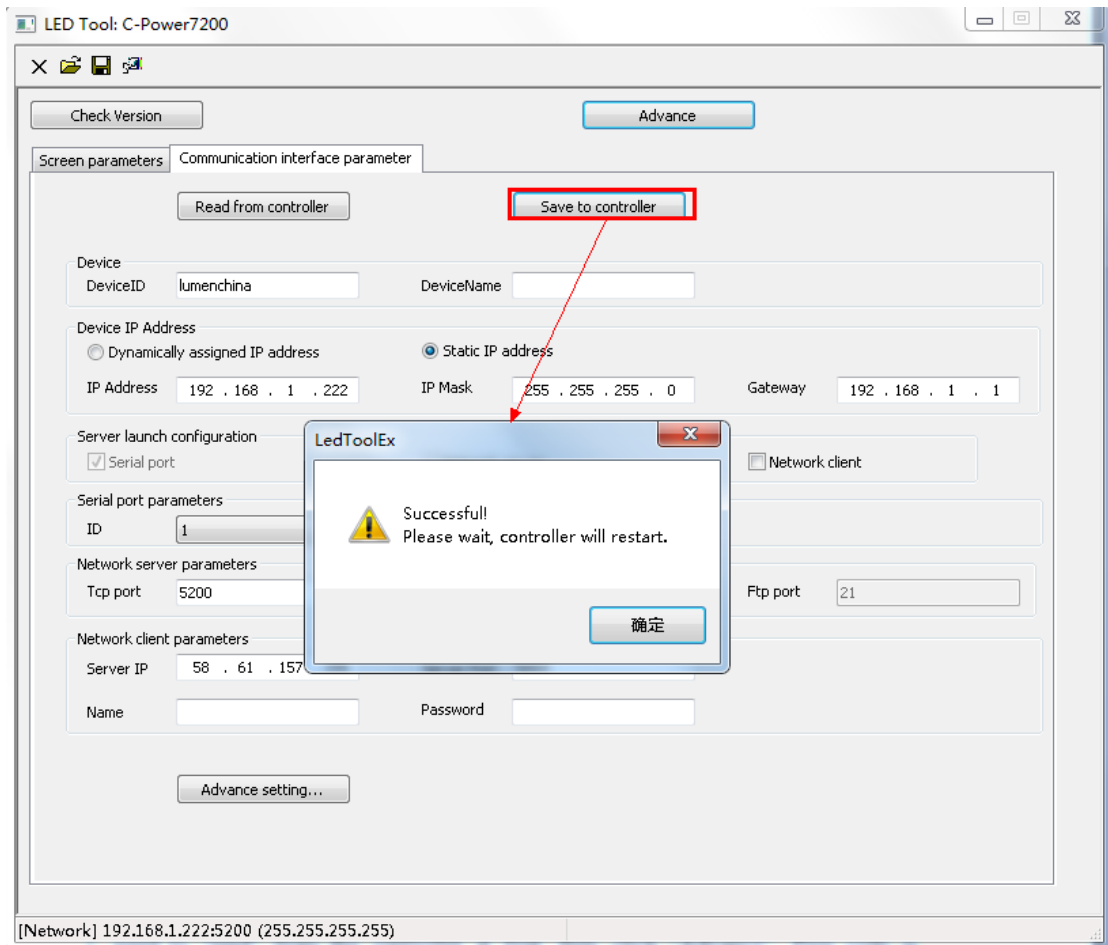


Four: Communication interface parameter setting

1. read the communication interface parameter from the controller, the controller's original parameter is: Device ID: lumenchina, Device IP Address is a static IP address: 192.168.1.222, IP Mask: 255.255.255.0, Gateway: 192.168.1.1; as the following picture showed:



2. the communication interface parameter can be changed, click “advance” pass code is “26888”, after resetting the data you want it to be, click “save to controller”, when it successful, the controller will restart. As the following picture showed:



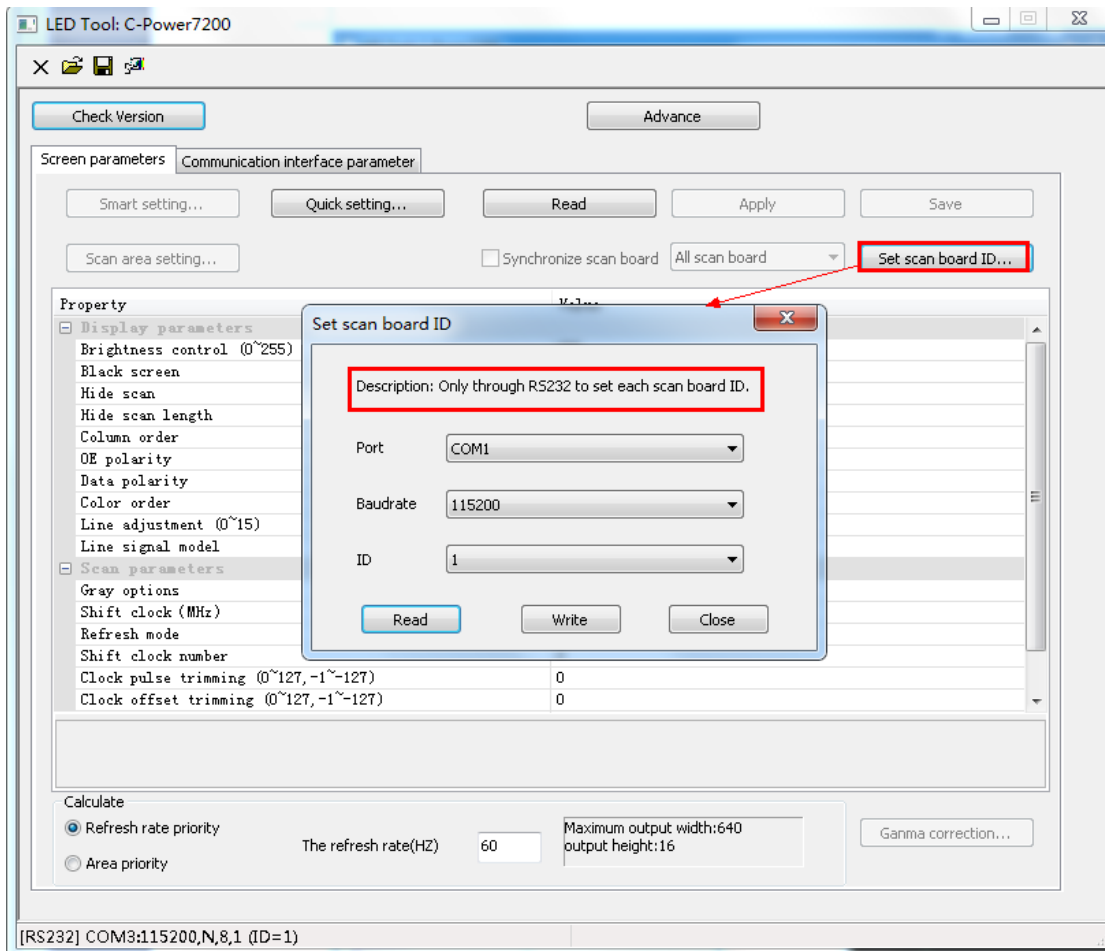
Five. Screen parameter setting

1. before the screen's parameters are able to be reset. It needs to "read" from the controller at first, then click "Advance", Pass code is "26888".

2. Set the scan board ID

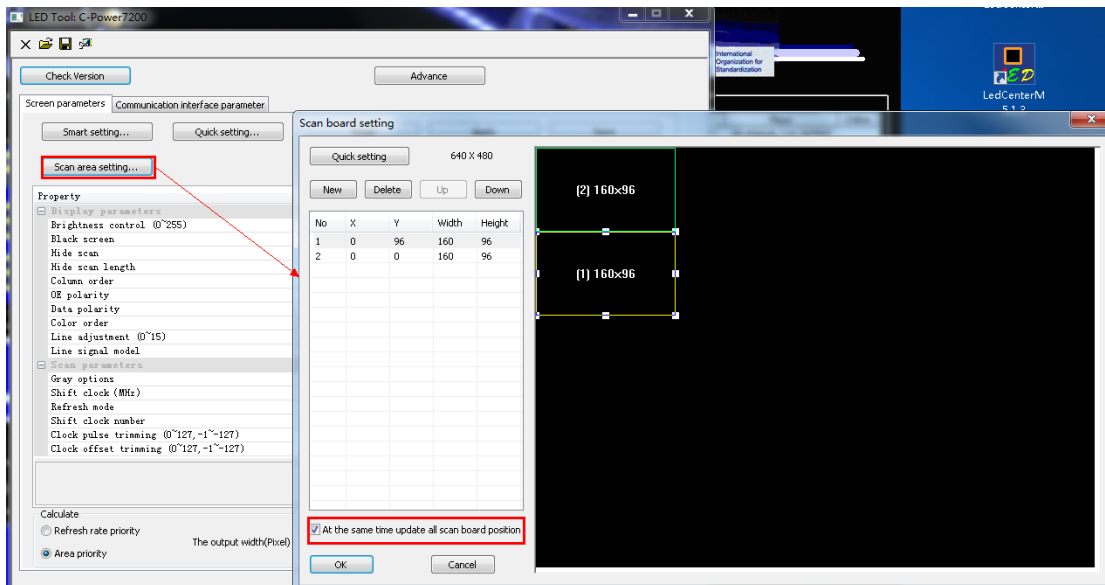
You can read ID of each scan board, if a same ID is set in different scan board, they will display same program on their corresponding window.

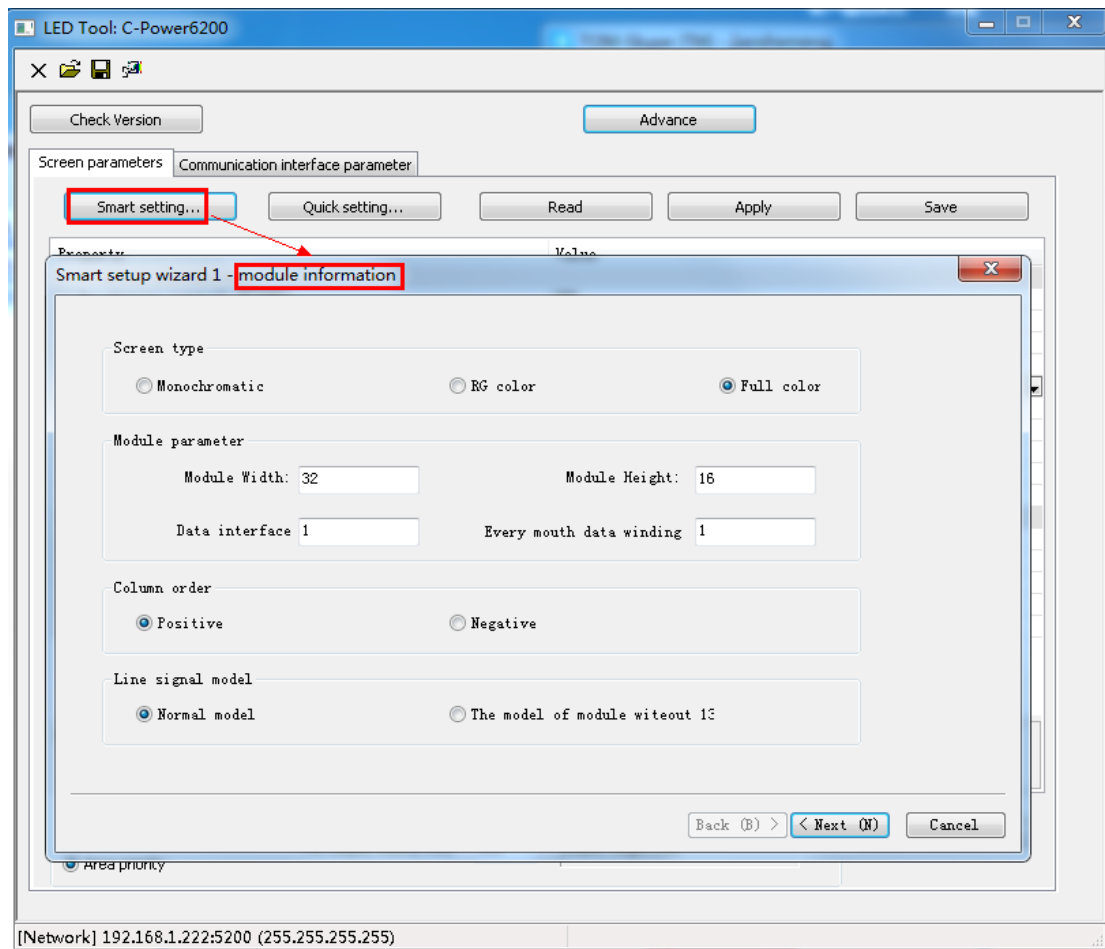
Steps as follow picture showed:



3. Set scan area

The scan area is corresponding to the scan board ID, as following showed





4. Smart setting

Before smart setting, need to click “synchronize scan board”, select one scan board to do the smart setting, when finished smart setting, select “all scan board”, and then click “apply” or “save”.

Steps as follows showed:

